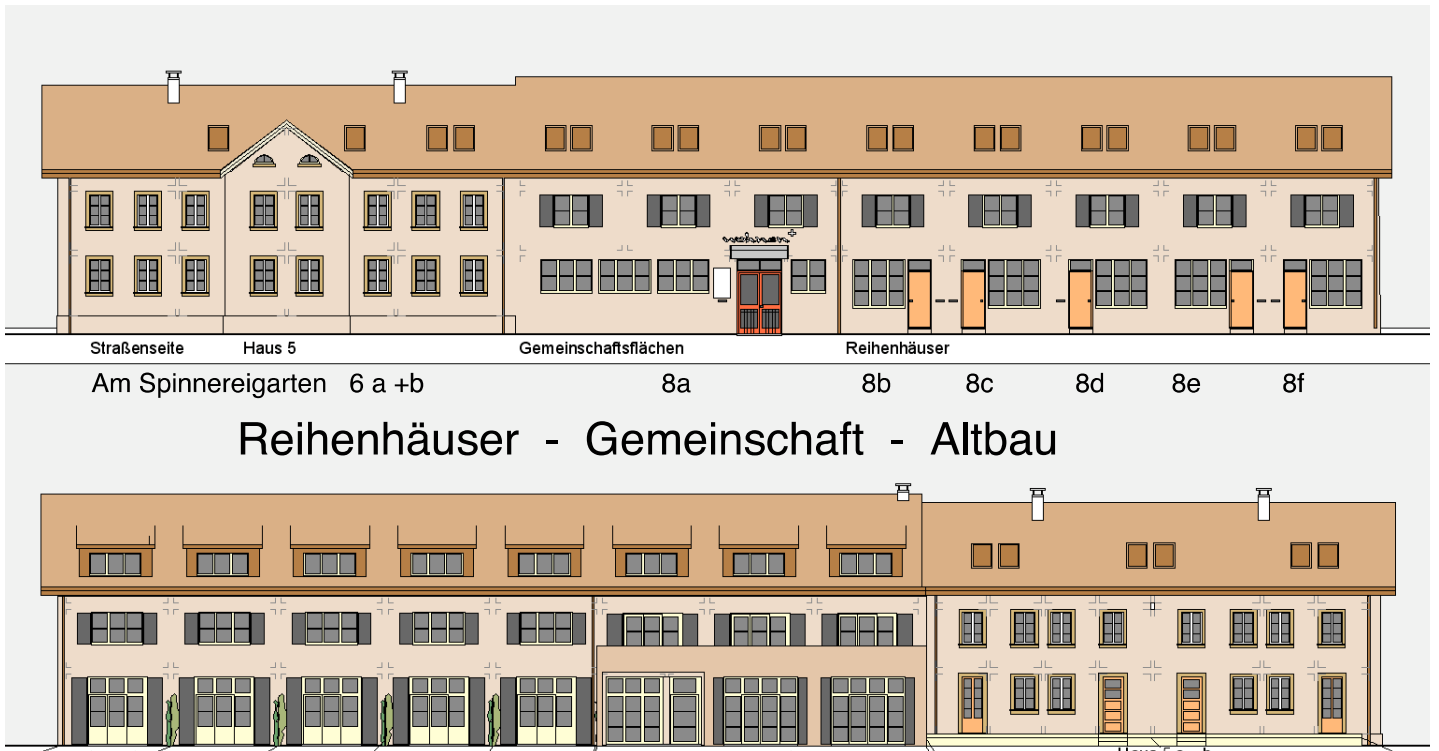


# wohnen+

ErBa-  
Bebauung  
Planstand  
Okt. 2018

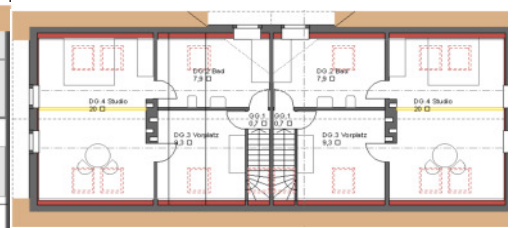
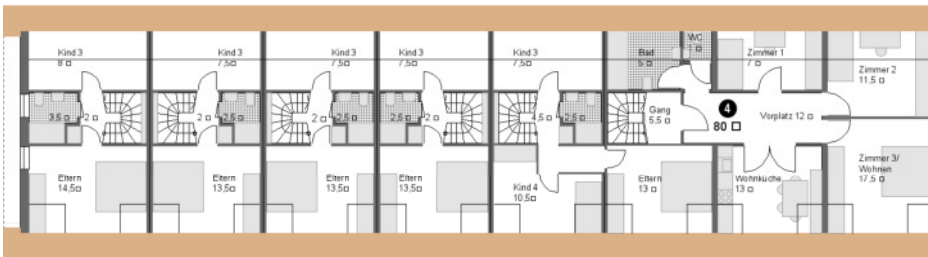


## Reihenhäuser - Gemeinschaft - Altbau

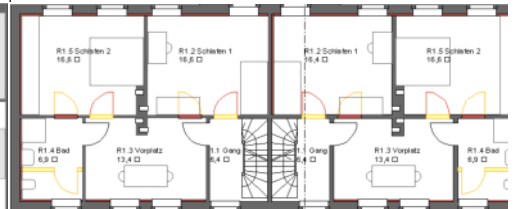
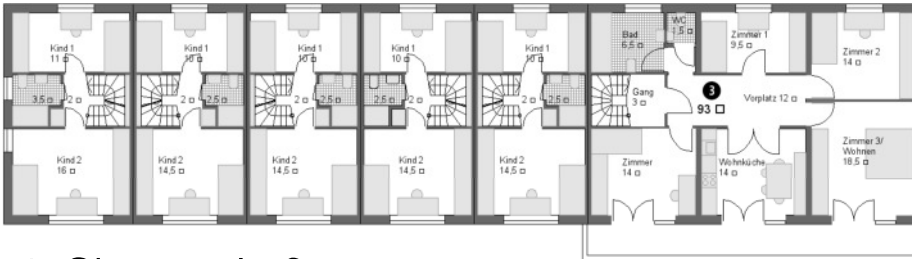
# Bebauung an der Straße • Grundrisse

## Reihenhäuser

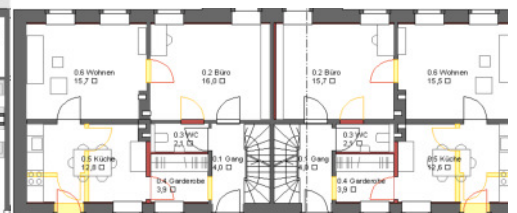
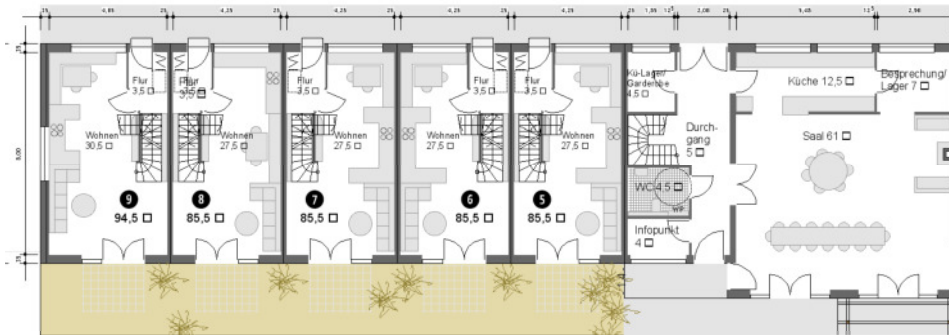
## Altbau-Doppelhaus



## Dachgeschoß

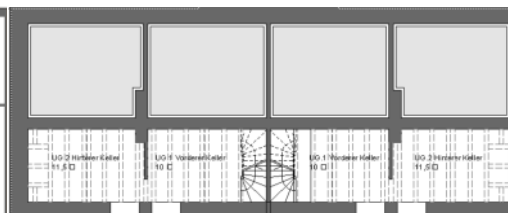
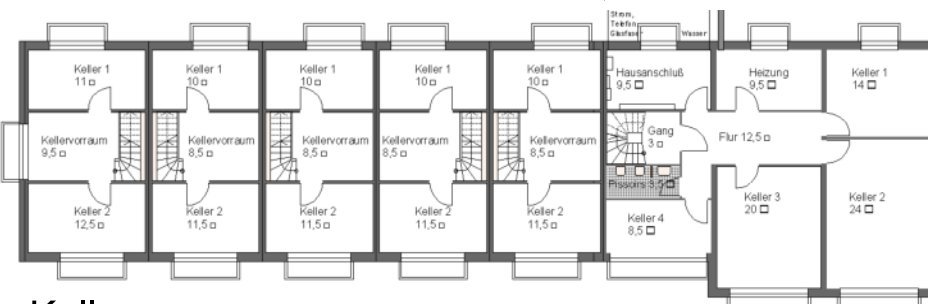


## 1. Obergeschoß



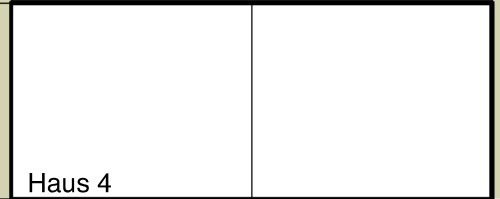
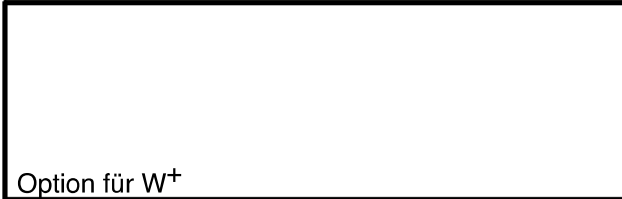
## Erdgeschoß

## Gemeinschaft



Keller

# Gesamtplan • Erdgeschoß

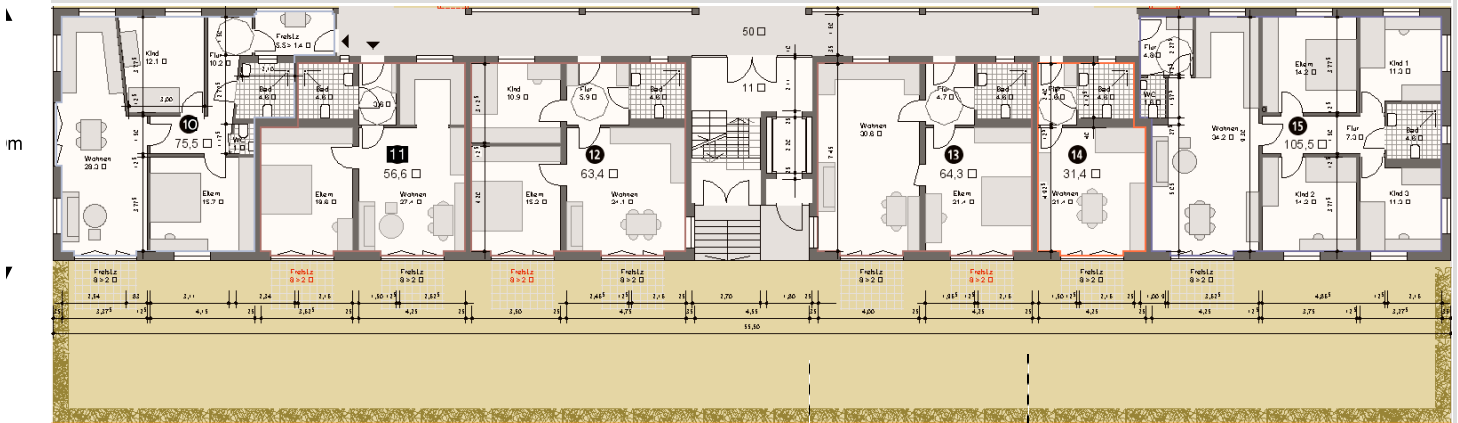
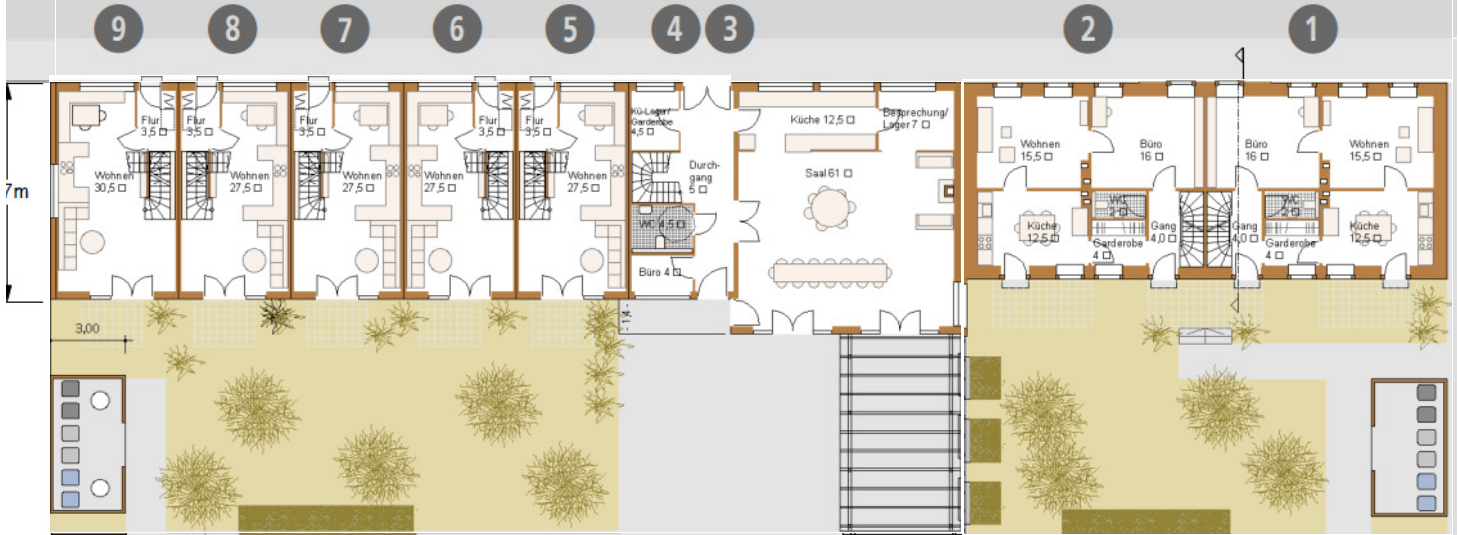


## Am Spinnereigarten (ehemals Morfstraße)

Neue Reihenhäuser

Zwischenbau

Arbeiterhaus

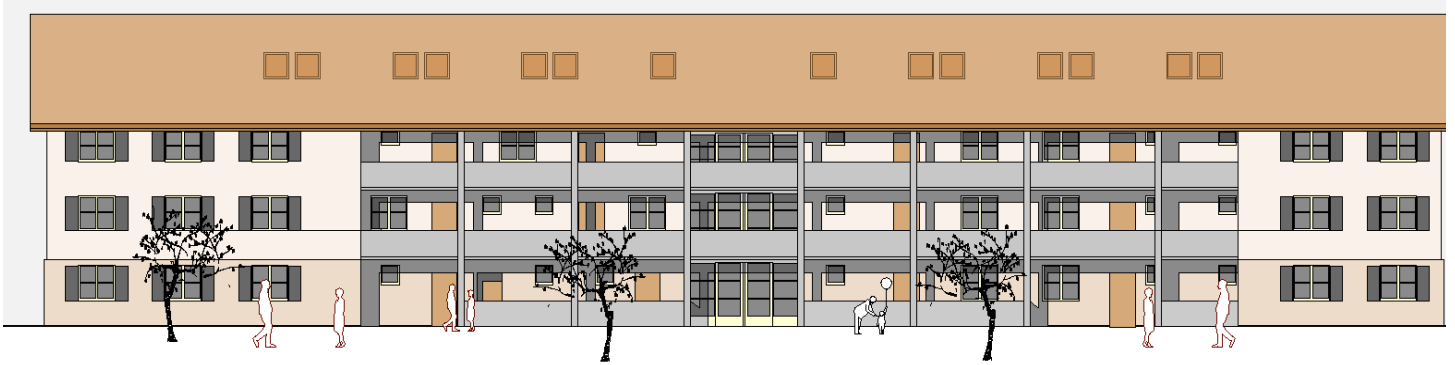




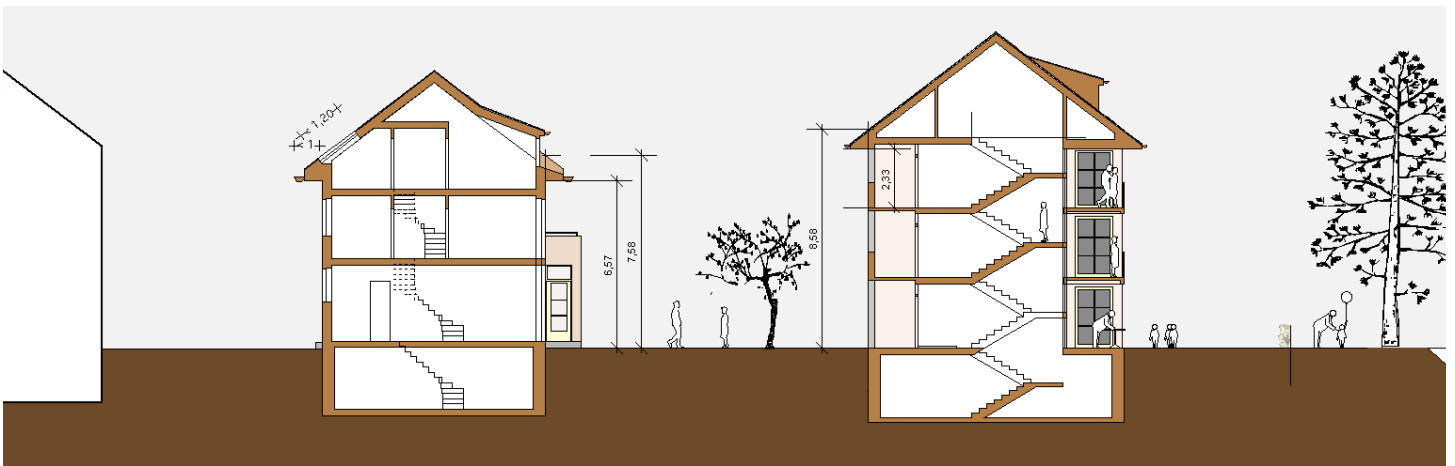
Geplante Bebauung am Kanal • Ansichten • Schnitte



Haus am Kanal • Ansicht v. Süden



Haus am Kanal • Ansicht Garten / Hofseite



Schnitte

• Reihenhäuser

• Haus am Kanal



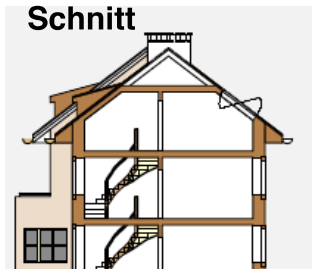
• Arbeiterhaus

• Reihenhaus

Ansicht v. Westen

• Haus am Kanal

Ansicht v. Osten



Ansicht v. Osten  
Schnitt